

1893. JANUARY, 31 Days.				Cash in Hand.		Cash Paid			
				£	s.	d.	£	s.	d.
THURSDAY, 26th.	FRIDAY, 27th.			Brought forward					
SATURDAY, 28th.	Sunday, 29th.								
MONDAY, 30th.	TUESDAY, 31st.								
WEDNESDAY, 1st.	JANUARY.	Appointments for next week :—							
	S 1 8 15 22 29								
	M 2 9 16 23 30								
	T 3 10 17 24 31								
	W 4 11 18 25								
	T 5 12 19 26								
	F 6 13 20 27								
	S 7 14 21 28								
I left off reading..... At Page...	Th.	Fri.	Sat.	Sun.	Mon.	Tu	Wed	Carried forward	

LENTILINE BISCUITS.

(Marriott's Patent).

SILVER MEDAL, LONDON, 1892.

Highly recommended for Professional and Business Men, Travellers, Invalids, and for Rearing Growing Children.

BRAIN FOOD.

Bone and Muscle Former.

Tins at 1/-, 2/9, and 5/4, or at 8d. per lb.; small size tin Post free on receipt of P.O.O. or Stamps for 1/4, of the Patentees,

E. MARRIOTT & Co., Hastings.

INVALID NOURISHING STOUT.

A Wholesome Tonic and Stimulating Beverage.

1/6 per gallon.

In four and a-half, nine, and eighteen-gallon casks.

Half-Pint Bottles - 1/9 per dozen.

Pint Bottles - - - 3/6 "

The Lancet of July 23d, 1892, says :—

"Well Brewed, Ripe, and of Mellow Full Taste."

To be had only from

J. & T. USHER,

Horfield Road Brewery, Bristol.

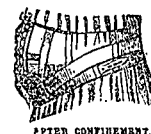
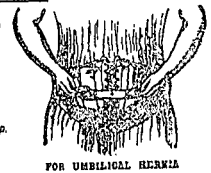
TEUFEL BELTS

AND
SPECIALITIES FOR THE MEDICAL PROFESSION.

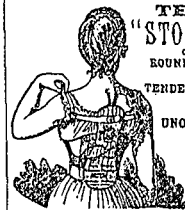


ADVANTAGES over other BELTS

1. Accurate Fit Guaranteed.
2. Freedom from Rucking up.
3. Excellence in Design.
4. Superior Workmanship.
5. Prompt Delivery.
6. Specially Suitable Materials.
7. Only one measurement required, over line of greatest dilatation.

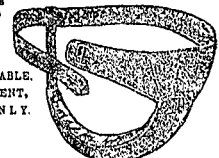


TRADE MARK.



LADIES' "SAFE-GUARD" BANDAGE

PREVENTS
CHAFING
AND
CHILL:
COMFORTABLE.
EFFICIENT,
CLEANLY.



SOLD BY
SURGICAL INSTRUMENT MAKERS, CHEMISTS, LADIES' OUTFITTERS, &c
For ILLUSTRATED CATALOGUE Apply to
TEUFEL REMEDIAL APPLIANCES CO.
LONDON.

Sample Depot. 456, WEST STRAND, W.C. Wholesale Warehouse 61, MOOR LANE, E.C.
Ladies' Department in charge of Mrs. Cummings. Telephone "Teufel, London"

Teufel Goods can be obtained of:
Dr. JAEGER'S Co., Ltd., 3 & 4, Princes St., Cavendish Square, W
SWEARS & WELLS, Lilliputian Warehouse, 192, Regent St., W
W. WHITZLEY, Westbourne Grove, W
CIVIL SERVICE CO-OPERATIVE SOCIETY, Ltd., 28, Daymarket, S.W.
SPIERS & POND'S STORES, Ltd., Queen Victoria Street, E.C. 4

[previous page](#)

[next page](#)